



Document Outline	
<!DOCTYPE>	Version of (X)HTML
<html>	HTML document
<head>	Page information
<body>	Page contents

Comments
<!-- Comment Text -->

Page Information	
<base />	Base URL
<meta />	Meta data
<title>	Title
<link />	Relevant resource
<style>	Style resource
<script>	Script resource

Document Structure	
<h[1-6]>	Heading
<div>	Page section
	Inline section
<p>	Paragraph
 	Line break
<hr />	Horizontal rule

Links	
	Page link
	Email link
	Anchor
	Link to anchor

Text Markup	
	Strong emphasis
	Emphasis
<blockquote>	Long quotation
<q>	Short quotation
<abbr>	Abbreviation
<acronym>	Acronym
<address>	Address
<pre>	Pre-formatted text
<dfn>	Definition
<code>	Code
<cite>	Citation
	Deleted text
<ins>	Inserted text
<sub>	Subscript
<sup>	Superscript
<bdo>	Text direction

Lists	
	Ordered list
	Unordered list
	List item
<dl>	Definition list
<dt>	Definition term
<dd>	Term description

Forms	
<form>	Form
<fieldset>	Collection of fields
<legend>	Form legend
<label>	Input label
<input />	Form input
<select>	Drop-down box
<optgroup>	Group of options
<option>	Drop-down options
<textarea>	Large text input
<button>	Button

Tables	
<table>	Table
<caption>	Caption
<thead>	Table header
<tbody>	Table body
<tfoot>	Table footer
<colgroup>	Column group
<col />	Column
<tr>	Table row
<th>	Header cell
<td>	Table cell

Images and Image Maps	
	Image
<map>	Image Map
<area />	Area of Image Map

Common Character Entities		
"	"	Quotation mark
&	&	Ampersand
<	<	Less than
>	>	Greater than
@	@	"At" symbol
€	€	Euro
•	•	Small bullet
™	™	Trademark
£	£	Pound
 		Non-breaking space
©	©	Copyright symbol

Objects	
<object>	Object
<param />	Parameter

Empty Elements	
<area />	
<base />	<input />
 	<link />
<col />	<meta />
<hr />	<param />

Core Attributes	
class	style
id	title
<i>Note: Core Attributes may not be used in base, head, html, meta, param, script, style or title elements.</i>	

Language Attributes	
dir	lang
<i>Note: Language Attributes may not be used in base, br, frame, frameset, hr, iframe, param or script elements.</i>	

Keyboard Attributes	
accesskey	tabindex

Window Events	
onLoad	onUnload

Form Events	
onBlur	onReset
onChange	onSelect
onFocus	onSubmit

Keyboard Events	
onKeyDown	onKeyUp
onKeyPress	

Mouse Events	
onClick	onMouseout
onDbclick	onMouseover
onMouseDown	onMouseup
onMouseMove	



HTML 5 NEW TAG

TAG NOT SUPPORTED IN HTML 5

- <!---->** Defines a comment
- <IDOCTYPE>** Defines the document type
- <a>** Defines a hyperlink
href, hreflang, media, ping, rel, target, type
- <abbr>** Defines an abbreviation
- <acronym>** Used to define an embedded acronym
- <address>** Defines an address element
- <applet>** Used to define an embedded applet
- <area>** Defines an area inside an image map
alt, coords, href, hreflang, media, ping, rel, shape, target, type
- <article>** Defines an article
cite, pubdate
- <aside>** Defines content aside from the page content
- <audio>** Defines sound content
autoplay, controls, src
- ** Defines bold text
- <base>** Defines a base URL for all the links in a page
href, target
- <basefont>** Used to define a default font-color, font-size, or font-family for all the document
- <bdo>** Defines the direction of text display
dir
- <big>** Used to make text bigger
- <blockquote>** Defines a long quotation
cite
- <body>** Defines the body element
Inserts a single line break
-
** Defines a push button
autofocus, disabled, form, formaction, formenctype, formmethod, formnovalidate, formtarget, name, type, value
- <button>** Defines graphics
height, width
- <canvas>** Defines a table caption
- <caption>** Used to center align text and content
- <center>** Defines a citation
- <cite>** Defines computer code text
- <code>** Defines attributes for table columns
autobuffer, autoplay, controls, src
- <col>** Defines groups of table columns
- <colgroup>** Defines a command button
checked, disabled, icon, label, radiogroup, type

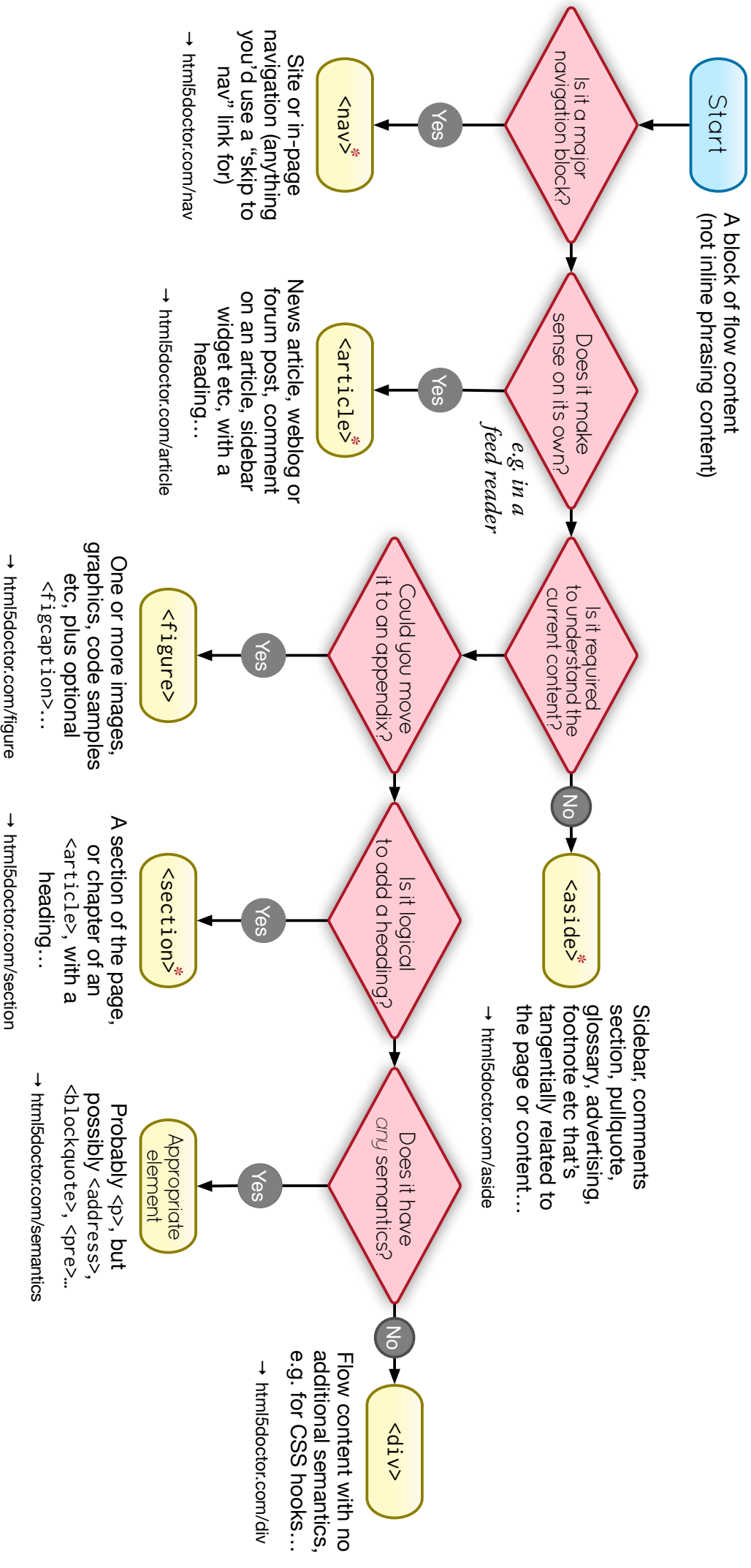
- <datalist>** Defines a dropdown list
- <dd>** Defines a definition description
- ** Defines deleted text
cite, datetime
- <details>** Defines details of an element
open
- <dialog>** Defines a dialog (conversation)
- <dlh>** Defines a definition term
Used to define a directory list
- <dlv>** Defines a section in a document
- <dl>** Defines a definition list
- <dt>** Defines a definition term
- ** Defines emphasized text
- <embed>** Defines external interactive content or plugin
height, src, type, width
- <fieldset>** Defines a fieldset
disabled, form, name
- <figure>** Defines a group of media content, and their caption
- ** Used to define font face, font size, and font color of text
- <footer>** Defines a footer for a section or page
Defines a form
- <form>** accept-charset, action, autocomplete, enctype, method, name, novalidate, target
- <frame>** Used to define one particular window (frame) within a frameset
- <frameset>** Used to define a frameset, which organizes multiple windows (frames)
- <h1> to <h6>** Defines header 1 to header 6
- <h2>** Defines information about the document
- <h3>** Defines a header for a section or page
- <hgroup>** Defines information about a section in a document
- <hr>** Defines a horizontal rule
- <html>** Defines an html document
manifest, xmlns
- <i>** Defines italic text
- <iframe>** Defines an inline sub window
height, name, sandbox, seamless, src, width
- ** Defines an image
alt, src, height, ismap, usemap, width
- <input>** Defines an input field
accept, alt, autocomplete, autofocus, checked, disabled, form, formaction, formenctype, formmethod, formnovalidate, formtarget, height, list, max, maxlength, min, multiple, name, pattern, placeholder, readonly, required, size, src, step, type, value, width

- <ins>** Defines inserted text
cite, datetime
- <keygen>** Defines a generated key in a form
autofocus, challenge, disabled, form, keytype, name
- <kbd>** Defines keyboard text
- <label>** Defines an inline sub window
for, form
- <legend>** Defines a title in a fieldset
- ** Defines a list item
value
- <link>** Defines a resource reference
href, hreflang, media, rel, sizes, type
- <map>** Defines an image map
name
- <mark>** Defines marked text
- <menu>** Defines a menu list
label, type
- <meta>** Defines meta information
charset, content, http-equiv, name
- <meter>** Defines measurement within a predefined range
high, low, max, min, optimum, value
- <nav>** Defines navigation links
- <noframes>** Used to display text for browsers that do not handle frames
- <noscript>** Defines a noscript section
- <object>** Defines an embedded object
data, form, height, name, type, usemap, width
- ** Defines an ordered list
reversed, start
- <optgroup>** Defines an option group
label, disabled
- <option>** Defines an option in a drop-down list
disabled, label, selected, value
- <output>** Defines some types of output
for, form, name
- <p>** Defines a paragraph
- <param>** Defines a parameter for an object
name, value
- <pre>** Defines preformatted text
- <progress>** Defines progress of a task of any kind
max, value
- <q>** Defines a short quotation
cite
- <rp>** Used in ruby annotations to define what to show browsers that do not support the ruby element
- <rt>** Defines explanation to ruby annotations
- <ruby>** Defines ruby annotations
- , <strike>** Used to define strikethrough text

- <samp>** Defines sample computer code
- <script>** Defines a definition list
async, type charset defer, src
- <section>** Defines a section
cite
- <select>** Defines a selectable list
autofocus, disabled, form, multiple, name, size
- <small>** Defines small text
- <source>** Defines media resources
media, src, type
- ** Defines a section in a document
- ** Defines strong text
- <style>** Defines a style definition
type, media, scoped
- <sub>, <sup>** Defines sub/ super-scripted text
Defines a table summary
- <table>** Defines a table
summary
- <tbody>** Defines a table body
summary
- <td>** Defines a table cell
colspan, headers, rowspan
- <textarea>** Defines a text area
autofocus, cols, disabled, form, maxlength, name, placeholder, readonly, required, rows, wrap
- <tfoot>, <thead>** Defines a table footer / head
- <th>** Defines a table header
colspan, headers, rowspan, scope
- <time>** Defines a date/time
datetime
- <title>** Defines the document title
- <tr>** Defines a table row
datetime
- <tt>** Used to define teletype text
- <u>** Used to define underlined text
- ** Defines an unordered list
- <var>** Defines a variable
- <video>** Defines a video
autobuffer, autoplay, controls, height, loop, src, width



By @riddle & @boblet
www.html5doctor.com



* Sectioning content element

These four elements (and their headings) are used by HTML5's outlining algorithm to make the document's outline
→ html5doctor.com/outline



Selectors

*	All elements
div	<div>
div *	All elements within <div>
div span	 within <div>
div, span	<div> and
div > span	 with parent <div>
div + span	 preceded by <div>
.class	Elements of class "class"
div.class	<div> of class "class"
#itemid	Element with id "itemid"
div#itemid	<div> with id "itemid"
a[attr]	<a> with attribute "attr"
a[attr='x']	<a> when "attr" is "x"
a[class~='x']	<a> when class is a list containing 'x'
a[lang]='en']	<a> when lang begins "en"

Pseudo-Selectors and Pseudo-Classes

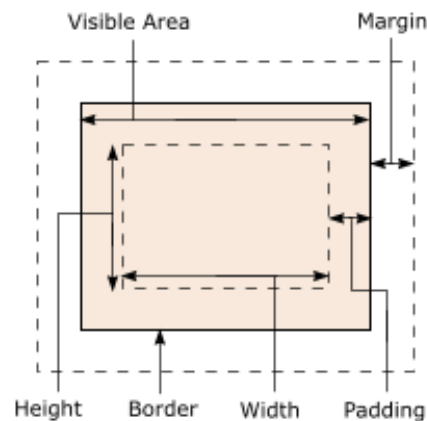
:first-child	First child element
:first-line	First line of element
:first-letter	First letter of element
:hover	Element with mouse over
:active	Active element
:focus	Element with focus
:link	Unvisited links
:visited	Visited links
:lang(var)	Element with language "var"
:before	Before element
:after	After element

Sizes and Colours

0	0 requires no unit
Relative Sizes	
em	1em equal to font size of parent (same as 100%)
ex	Height of lower case "x"
%	Percentage
Absolute Sizes	
px	Pixels
cm	Centimeters
mm	Millimeters
in	Inches
pt	1pt = 1/72in
pc	1pc = 12pt
Colours	
#789abc	RGB Hex Notation
#acf	Equates to "#aaccff"
rgb(0,25,50)	Value of each of red, green, and blue. 0 to 255, may be swapped for percentages.

Note Shorthand properties are marked X
Properties that inherit are marked +

Box Model



Positioning

display	clear
position	z-index
top	direction +
right	unicode-bidi
bottom	overflow
left	clip
float	visibility

Dimensions

width	min-height
min-width	max-height
max-width	vertical-align
height	

Color / Background

color +	background-repeat
background x	background-image
background-color	background-position
background-attachment	

Text

text-indent +	word-spacing +
text-align +	text-transform +
text-decoration	white-space +
text-shadow	line-height +
letter-spacing +	

Fonts

font + x	font-weight +
font-family +	font-stretch +
font-style +	font-size +
font-variant +	font-size-adjust +

Boxes

margin x	border-color x
margin-top	border-top-color
margin-right	border-right-color
margin-bottom	border-bottom-color
margin-left	border-left-color
padding x	border-style x
padding-top	border-top-style
padding-right	border-right-style
padding-bottom	border-bottom-style
padding-left	border-left-style
border x	border-width x
border-top x	border-top-width
border-bottom x	border-right-width
border-right x	border-bottom-width
border-left x	border-left-width

Tables

caption-side +	border-spacing +
table-layout	empty-cells +
border-collapse +	caption-header +

Paging

size	page-break-inside +
marks	page +
page-break-before	orphans +
page-break-after	widows +

Interface

cursor +	outline-style
outline x	outline-color
outline-width	

Aural

volume +	elevation
speak +	speech-rate
pause x	voice-family
pause-before	pitch
pause-after	pitch-range
cue x	stress
cue-before	richness
cue-after	speak-punctuation
play-during	speak-numeral
azimuth +	

Miscellaneous

content	list-style-type +
quotes +	list-style-image +
counter-reset	list-style-position +
counter-increment	marker-offset
list-style + x	

CSS Cheat Sheet

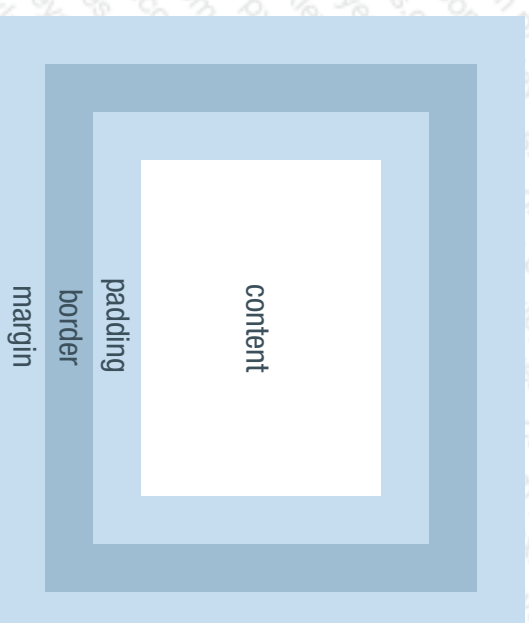
brought to you by pxleyes.com

Selectors

<code>div</code>	all DIV tags
<code>div, span</code>	all DIV tags and all SPAN tags
<code>div span</code>	all SPAN tags inside DIVs
<code>#content</code>	element with ID "content"
<code>.box</code>	all elements with CLASS "box"
<code>ul#box</code>	UL tag with ID "box"
<code>span.box</code>	all SPAN tags with CLASS "box"
<code>*</code>	all elements
<code>#box *</code>	all elements inside #box
<code>a:link, a:active, a:visited</code>	links in normal state, in clicked state, and in visited state
<code>a:hover</code>	link with mouse over it
<code>div > span</code>	all SPANs one-level deep in a DIV

<code>font-family</code>	font used, e.g. Helvetica, Arial
<code>font-size</code>	text size, e.g. 60px, 3em
<code>color</code>	text color, e.g. #000, #abcdef
<code>font-weight</code>	how bold the text is, e.g. bold
<code>font-style</code>	what style the text is, e.g. italic
<code>text-decoration</code>	sets a variety of effects on text, e.g. underline, overline, none
<code>text-align</code>	how text is aligned, e.g. center
<code>line-height</code>	spacing between lines, e.g. 2em
<code>letter-spacing</code>	spacing between letters, e.g. 5px
<code>text-indent</code>	indent of the first line, e.g. 2em
<code>text-transform</code>	applies formatting to text, e.g. upper-case, lowercase, capitalize
<code>vertical-align</code>	align relative to baseline, e.g. text-top

Box Model



<code>border</code>	sets border style for all borders, in the format: border: (solid, dashed, dotted, double) (width) (color), e.g. border: solid 1px #000
<code>border-top</code>	sets border style for a specific border (same property syntax used for padding and margin, e.g. margin-left)
<code>border-bottom</code>	border (same property syntax used for padding and margin, e.g. margin-left)
<code>border-left</code>	border (same property syntax used for padding and margin, e.g. margin-left)
<code>border-right</code>	margin-left)
<code>list-style-type</code>	sets style of bullets, e.g. square
<code>list-style-position</code>	sets how text wraps when bulleted, e.g. outside, inside
<code>list-style-image</code>	sets an image for a bullet, e.g. list-style-image:url(bullet.png)

Positioning

<code>position</code>	places elements on screen, e.g. absolute, fixed, relative
<code>float</code>	stacks elements horizontally in a particular direction, e.g. left
<code>top, left, right, bottom</code>	specifies the offsets used in absolute, fixed, and relative positions, e.g. top:10px;left:10px
<code>display</code>	sets how the element is placed in the doc flow, e.g. block, inline, none
<code>z-index</code>	sets the stacking order of elements, e.g. z-index of 1 is below z-index of 2
<code>overflow</code>	sets what happens to content outside of container, e.g. auto, hidden

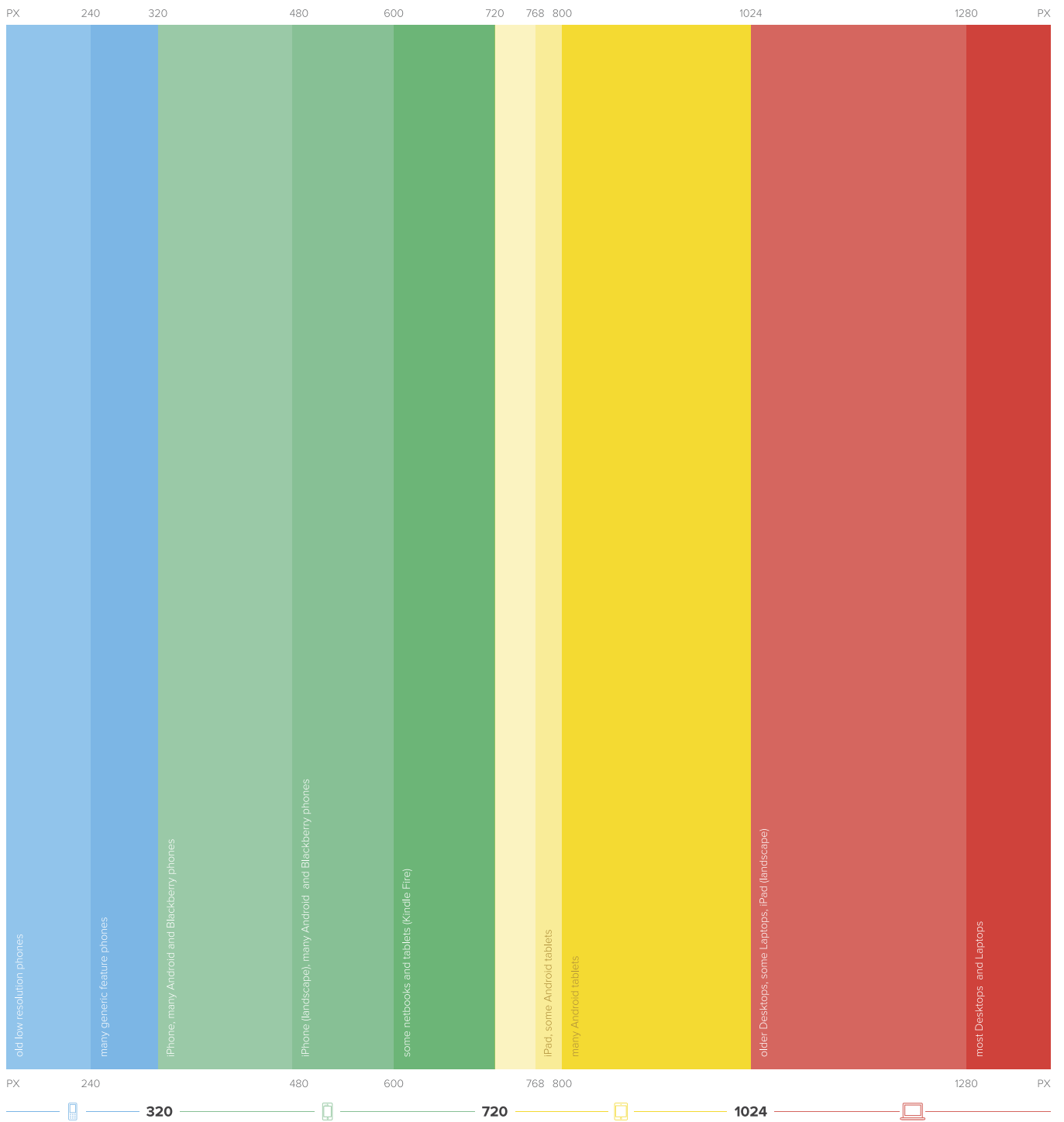
Borders and Lists

<code>border</code>	sets border style for all borders, in the format: border: (solid, dashed, dotted, double) (width) (color), e.g. border: solid 1px #000
<code>border-top</code>	sets border style for a specific border (same property syntax used for padding and margin, e.g. margin-left)
<code>border-bottom</code>	border (same property syntax used for padding and margin, e.g. margin-left)
<code>border-left</code>	border (same property syntax used for padding and margin, e.g. margin-left)
<code>border-right</code>	margin-left)
<code>list-style-type</code>	sets style of bullets, e.g. square
<code>list-style-position</code>	sets how text wraps when bulleted, e.g. outside, inside
<code>list-style-image</code>	sets an image for a bullet, e.g. list-style-image:url(bullet.png)

Everything Else

<code>background</code>	sets background of an element, in the format: background: (color) (image) (repeat) (position), e.g. background: #000 url(bg.png) repeat-x top left
<code>cursor</code>	sets shape of cursor, e.g. pointer
<code>outline</code>	a border drawn around an element that doesn't affect the box model
<code>border-collapse</code>	sets how borders within tables behave, e.g. collapse
<code>clear</code>	sets on what side a new line starts in relation to nearby floated elements, e.g. left, right, both

Always write `<!doctype html>` in your files!



RESPONSIVE WEB DESIGN

CHEATSHEET

